

**Projector Lift**

**2 Meter Drop**

**Model No.**

**AX102**



**Product Details**

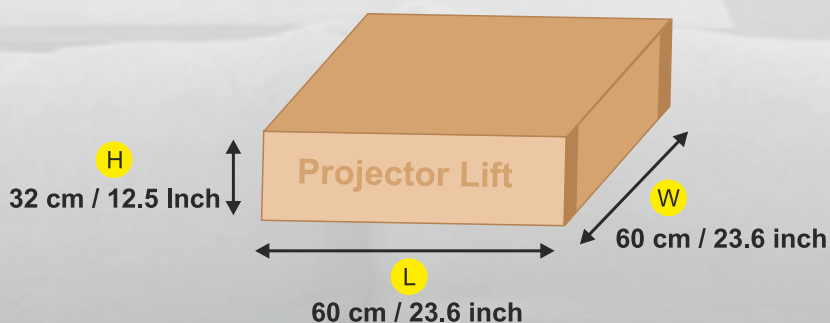
- Aluminum Scissor Lift
- 2 Meter Drop
- Tubular Motor
- 18 kg Weight Lifting Capacity with Bottom Sheet
- Cable Track For Better Cable Management
- Adjustable Clamps For Lower Plate



**1 YEAR  
WARRANTY**

**Lift Box Dimension**

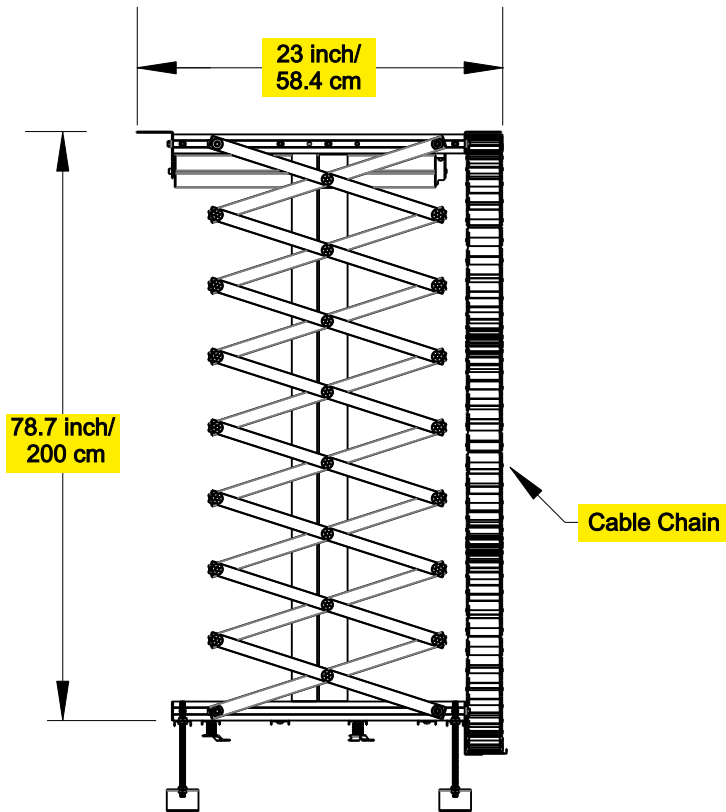
**Weight 16kg**



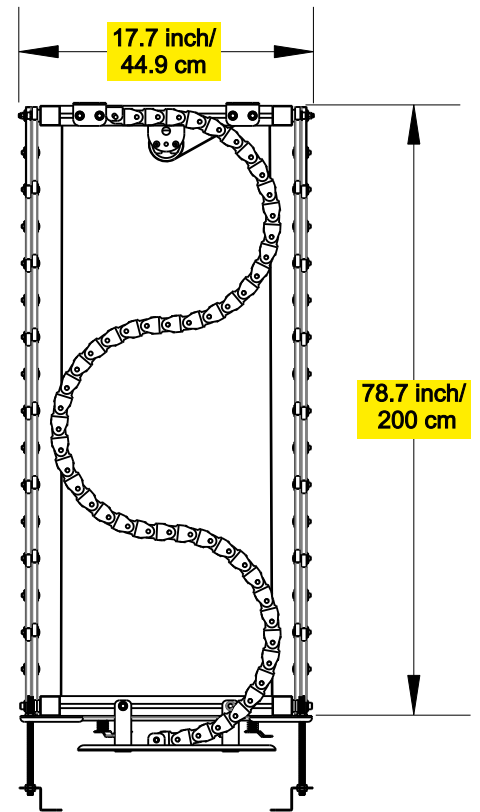
**Projector Lift**

**2 Meter Drop**

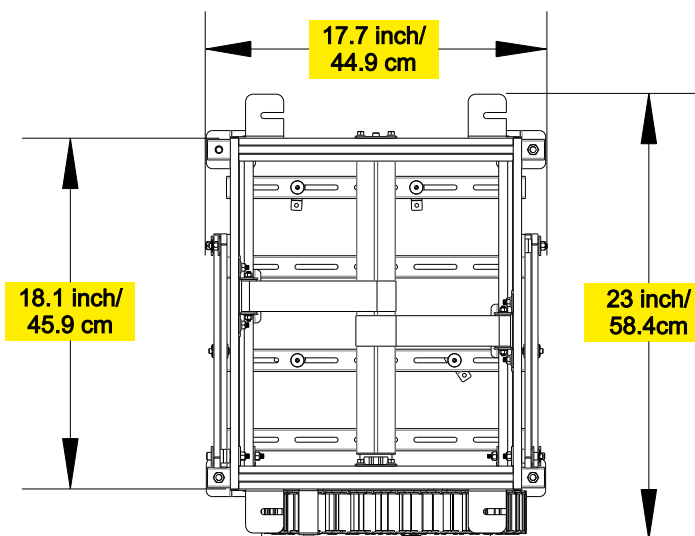
**Model No. AX102**



**SIDE VIEW**



**BACK VIEW**



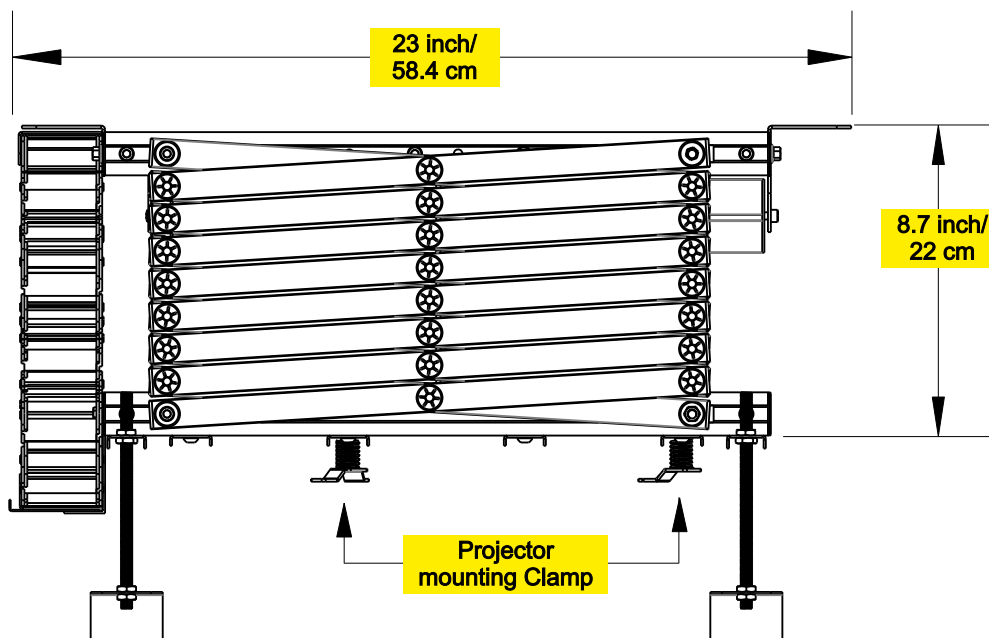
**TOP VIEW**

**Projector Lift**

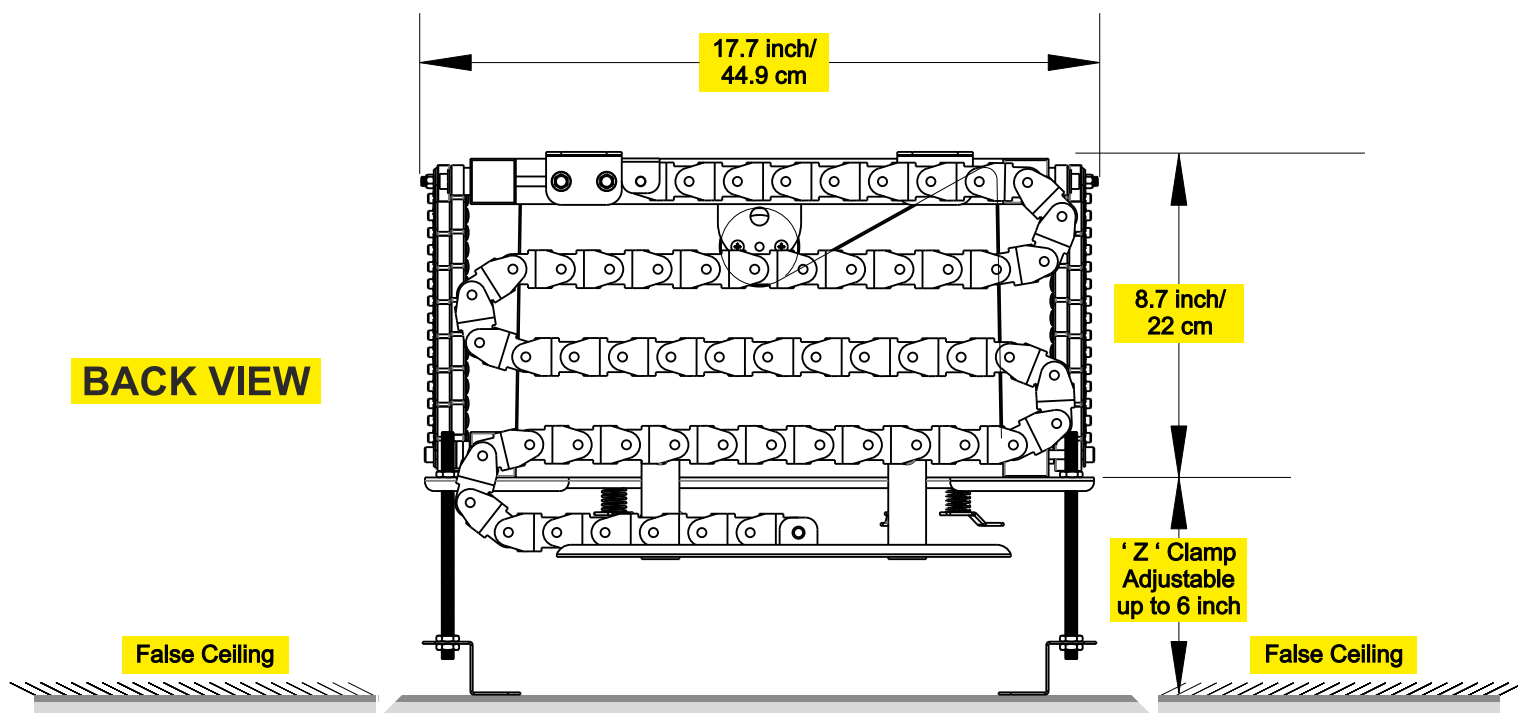
**2 Meter Drop**

**Model No. AX102**

**SIDE VIEW**



**BACK VIEW**



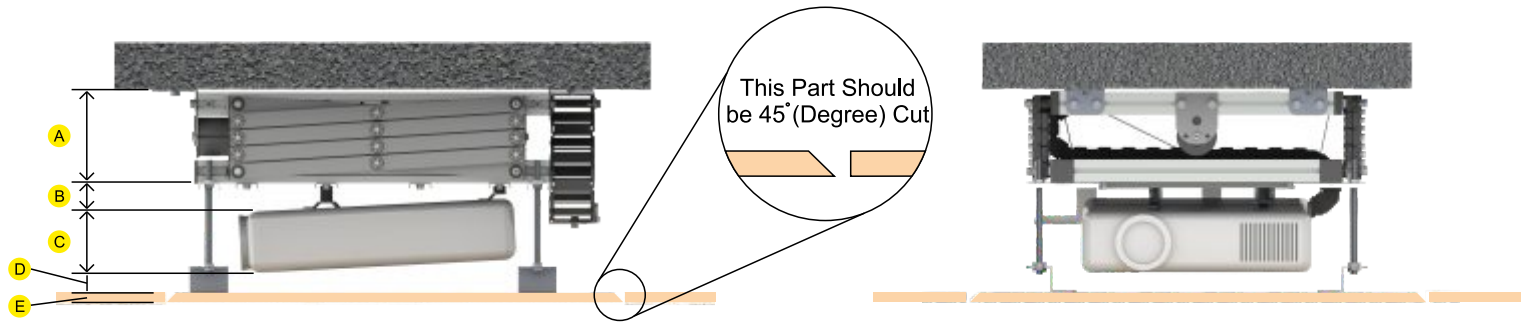
Note : Ceiling Sheet is not included in lift

## Projector Lift

## Projector Lift Installation ( Page - 1 )

How to calculate Gap between RCC Ceiling to False Ceiling.

### For Fixed Lens Projector



A = Lift Height

B = Projector Tilting Space

C = Projector Height

D = Gap Between Projector to Bottom Sheet

E = Bottom Sheet thickness

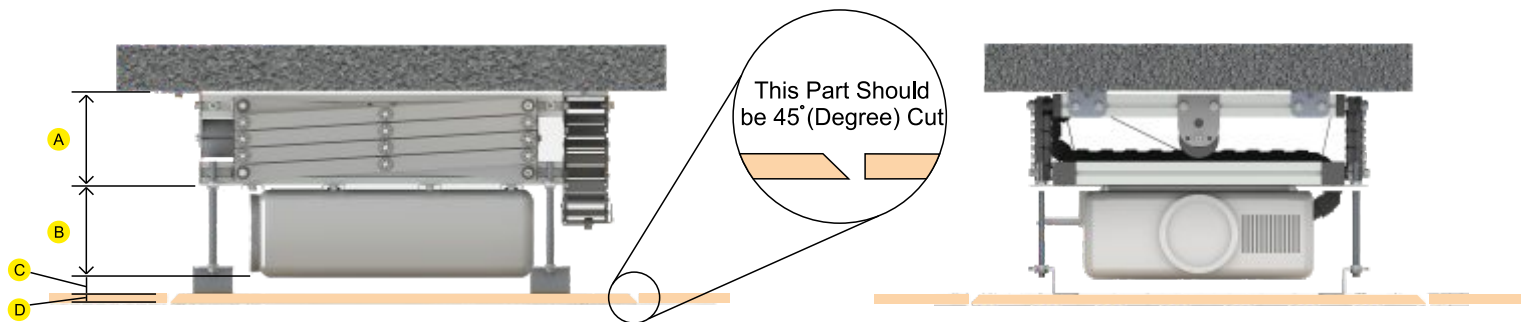
$$A ( \underline{8.7^{\circ}} ) \text{ Inch} + B ( \underline{\quad}^* ) \text{ Inch} + C ( \underline{\quad} ) \text{ Inch} + D ( \underline{\quad}^{\#} ) \text{ Inch} + E ( \underline{\quad} ) \text{ Inch} = ( \underline{\quad} ) \text{ inch}$$

● = AX102 Height

\* = Approx 1 to 1.5 inch

# = Approx 0.5 to 1 inch

### For Lens Shifting Projector



A = Lift Height

B = Projector Height

C = Space

D = Bottom Sheet thickness

$$A ( \underline{8.7^{\circ}} ) \text{ Inch} + B ( \underline{\quad} ) \text{ Inch} + C ( \underline{\quad}^* ) \text{ Inch} + D ( \underline{\quad}^{\#} ) \text{ Inch} = ( \underline{\quad} ) \text{ inch}$$

● = AX102 Height

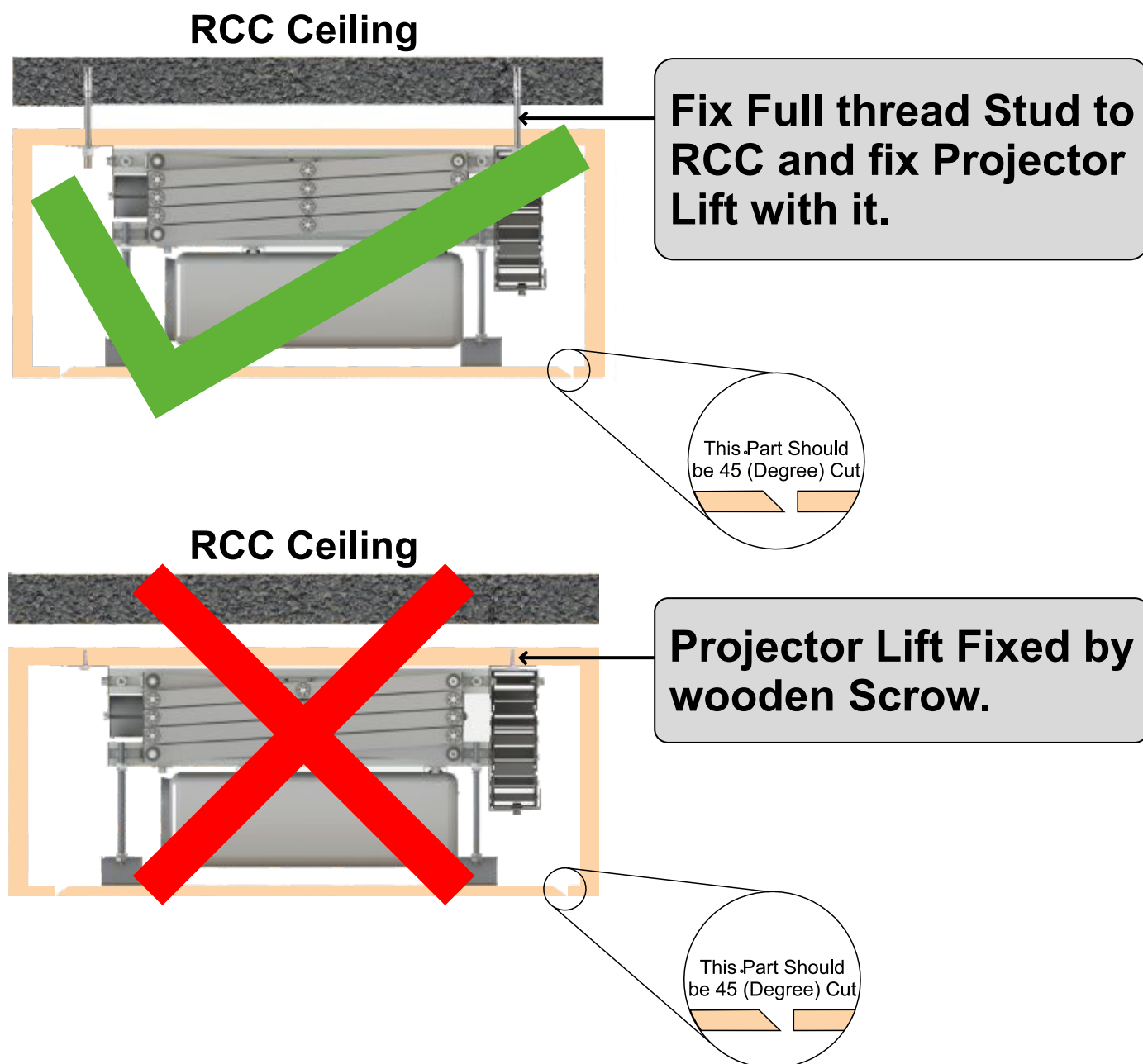
\* = Approx 1 to 1.5 inch

# = Approx 0.5 to 1 inch

## Projector Lift

## Projector Lift Installation ( Page - 2 )

If you are Installing Lift in Wooden Box Please  
Look into this Drawing



**It Cause High Noise**



## Projector Lift

## Projector Lift Installation ( Page - 3 )

**If not use Cable chain it cause Damage Lift by cable mess, in this case we will not Support any Warranty.**



**For better cable management must use cable chain**

**For Model AX 102 Bottom Sheet Cutout Minimum size 22 inch x 22 inch ideal size 24 inch x 24 inch**

